

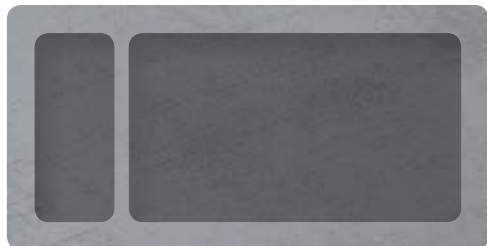
# HEPP ELEMENTS

A LIAISON FOR THE SENSES



## A THOUSAND WAYS TO FASCINATE. PAR EXCELLENCE.

HEPP ELEMENTS – the new 27-piece table-top collection from HEPP – offers endless freedom. The modern and unique design language fuses various materials expertly: stainless steel 18/10, concrete, melamine, porcelain and glass. Diversity is so elegant – the new look stands out skilfully from current collections. Two beautifully shaped stands provide the base elements. These can be freely combined with three stainless steel clips of various shapes and sizes as well as a wide range of accessories for the most varied uses.



STAND FUNCTION



STAND SEQUENCE

You now set the tone – HEPP ELEMENTS offers an extremely high degree of modularity and versatility of the core products. The successful and multi-award winning SEQUENCE buffet collection was rigorously developed further and transferred to the laid table. The extraordinary premium quality and diverse potential applications for lunch, dinner and coffee will impress your guests. The elements speak for themselves.

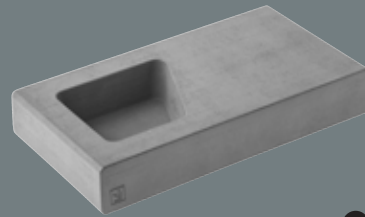




# EXTRA-ORDINARY

## STAND SEQUENCE CONCRETE

57.0195.9990  
185x102x32 mm



M1

## NAPKIN RING

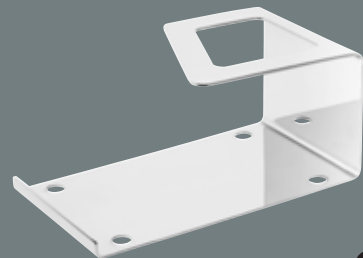
57.0219.6040  
55x51x10 mm



20

## CLIP STAND

57.0197.6040  
190x102x84 mm



C1

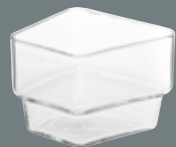


## HEPP ELEMENTS – FOR CONNOISSEURS OF GOOD TASTE.

HEPP ELEMENTS perfectly combines puristic practicality with aesthetics. The new collection is aimed at hoteliers with the courage to try something extraordinary, who want to set themselves apart from the crowd and create clear, unique selling points. By extending the formal language of the Sequence buffet collection, articles from both collections can be perfectly combined.

## GLASS BOWL

57.0216.9990  
80x71x63 mm



## PORCELAIN DISH XXS

57.0201.9800  
83x74x31 mm



### BREAD BASKET S FROM SEQUENCE BUFFET SYSTEM:

**FABRIC INSERT**  
57.0163.9990  
**FRAME S70**  
57.0143.6040  
170x146x70 mm



## STAND SET WITH MILL CONCRETE

57.0235.6040

**SET CONSISTING OF**

**SET ALSO AVAILABLE IN MELAMINE**  
57.0236.6040

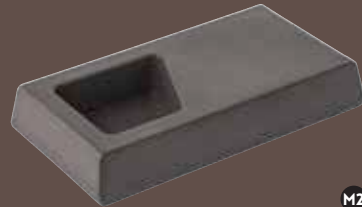




# FUNCTIONAL

## STAND SEQUENCE MELAMINE

57.0195.9991  
185x102x32 mm



M2

## PASTRY STAND

57.0210.6040  
155x131x111 mm



14

## MILK JUG

57.0211.6040  
Capacity: 150ml  
90x82x95 mm



13

## HIGH MODULARITY AND MULTIPLE USE OF CORE PRODUCTS.

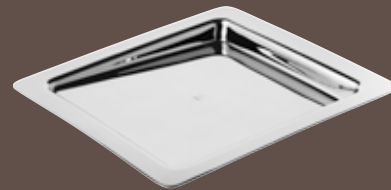
Effortlessly combined to create a superb modular system. Our customers have almost unlimited possibilities when it comes to design and function. Space-saving like no other. For example, the flower vase can be turned into a candle lamp with the help of an adapter.



**LID FOR PORCELAIN DISH XXS**

57.0203.6040  
89x77x18 mm

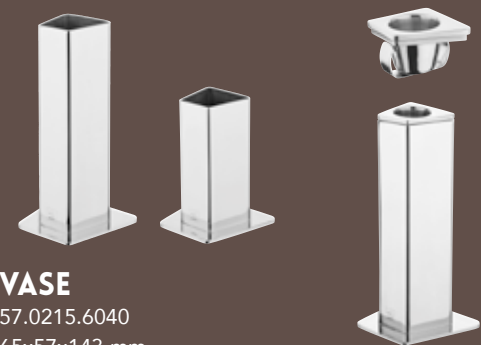
2



**TRAY**

57.0200.6040  
166x166x16 mm

6



**VASE**

57.0215.6040  
65x57x143 mm

16

**VASE SMALL**

57.0215.6140  
65x57x95 mm

17

**ADAPTER CANDLE NOZZLE**

57.0220.6040  
38x35x24 mm

18



**MILK AND SUGAR SET**

57.0241.6040

511

SET CONSISTING OF

1 2 3 6 13





## A FUSION OF VARIOUS MATERIALS.

Noble elegance for lunch or dinner or for an afternoon coffee. The compelling look makes it so easy: HEPP ELEMENTS skilfully brings together different materials.



**NAPKIN HOLDER**

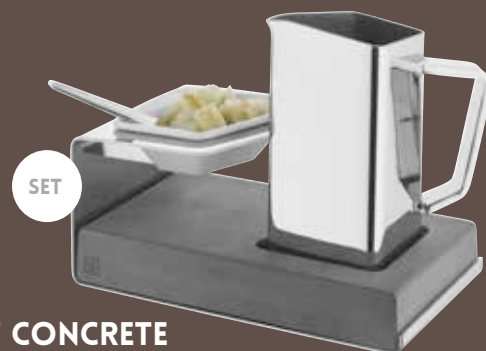
57.0217.6040  
90x36x120 mm

19

### SOUP AT THE TABLE

Your soup can be served practically and elegantly with the soup set.

With a simple shape and timeless design, the perfect accompaniment to enjoying soup – enhanced by shining brilliance and flexibility at the table.



SET

### SOUP SET CONCRETE

57.0242.6040

S9

SET CONSISTING OF

M1 C1 1 3 12

SET ALSO AVAILABLE IN MELAMINE

57.0243.6040

**BOTTLE COOLER**

57.0213.6040  
151x130x180 mm

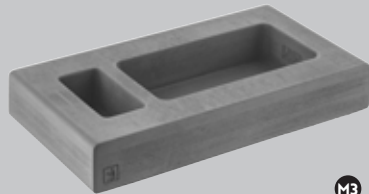
15



# ELEGANT

**STAND  
FUNCTION  
CONCRETE**

57.0196.9990  
185x102x32 mm



M3



**FRAME XXS**

57.0202.6040  
78x69x30 mm

5



**DOUBLE-CLIP  
STAND SET  
CONCRETE**

57.0239.6040

S7

**SET CONSISTING OF**

M1 C2 1

**SET ALSO AVAILABLE IN MELAMINE**

57.0240.6040





## HEPP ELEMENTS – MASTERPIECES WITH CHARACTER.

A new casual look that clearly stands out from other collections. Contrast is the basis for its attractiveness: stainless steel and concrete come together to create a harmonious whole. Industrial style meets elegance.

### CLIP CARD HOLDER

57.0199.6040  
202x102x102 mm



C3



### SALT SHAKER

57.0206.6040  
29x24x75 mm

7

### PEPPER SHAKER

57.0207.6040  
29x24x75 mm

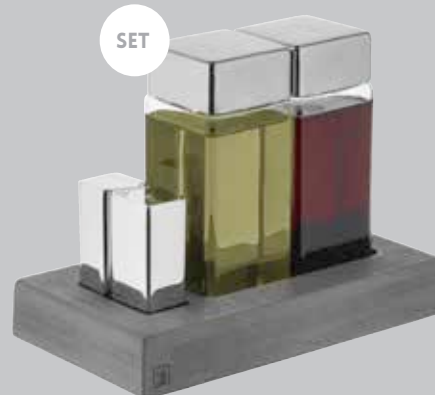
8

### TOOTHPICK STAND

57.0208.6040  
29x24x55 mm

9

SET



### VINEGAR AND OIL SET CONCRETE

57.0233.6040

S1

SET CONSISTING OF

M3 7 8 10

SET ALSO AVAILABLE IN MELAMINE

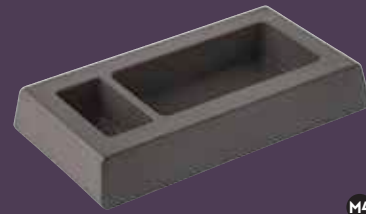
57.0234.6040



# VERSATILE

## STAND FUNCTION MELAMINE

57.0196.9991  
185x102x32 mm



M4

## SALT/PEPPER MILL

57.0209.6040  
51x51x195 mm



11

## SAUCE JUG

57.0212.6040  
Capacity: 300ml  
93x85x150 mm



12





## HEPP ELEMENTS – A PERFECTLY THOUGHT OUT DESIGN CONCEPT.

Usefulness and economy are paramount. They form the basis of a unique, independent, practical aesthetic that brings out the best in all functions. The futuristic impression is inviting and innovative at the same time.

### VINEGAR/OIL BOTTLE

57.0205.6040  
52x52x135 mm



10

### SERVING SPOON FOR PORCELAIN DISH XXS

57.0204.6040  
107x21x6 mm



3



### CLIP STAND SET MELAMINE

57.0238.6040

S6

SET CONSISTING OF

M2 C1 1

SET ALSO AVAILABLE IN CONCRETE

57.0237.6040

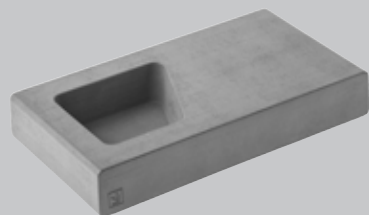


## STAND SEQUENCE

■ BASIC ITEM TO COMBINE VARIOUS SETS, BY USING VARIOUS INSERTS AND/OR CLIPS. ■ SMALL SYNTHETIC FEET, TO ENSURE A STABLE BASE BOTH ON THE TABLE AND IN THE CLIPS. ■ SEQUENCE SHAPE INDENT ■ FITS ALL CLIPS AS WELL AS THE FOLLOWING INSERTS: PORCELAIN DISHES XXS, PASTRY STANDS, SAUCE JUG, SMALL AND LARGE VASES, GLASS BOWLS.

### STAND SEQUENCE CONCRETE

57.0195.9990  
185x102x32 mm

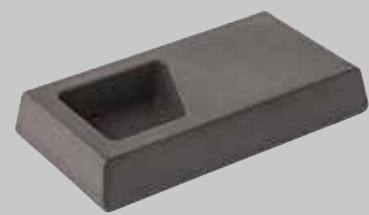


M1

High-quality concrete look, integrated logo  
Not dishwasher or food safe

### STAND SEQUENCE MELAMINE

57.0195.9991  
185x102x32 mm



M2

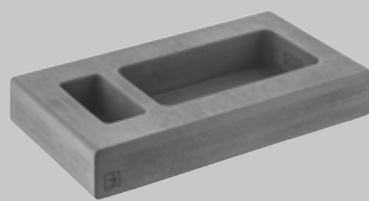
Melamine with canvas look in chocolate brown (pantone 7518)  
Dishwasher safe, not food safe

## STAND FUNCTION

■ BASIC ITEM TO COMBINE VARIOUS SETS, BY USING VARIOUS INSERTS AND/OR CLIPS. ■ SMALL SYNTHETIC FEET, TO ENSURE A STABLE BASE BOTH ON THE TABLE AND IN THE CLIPS. ■ 2 RIGHT-ANGLED INDENTS ■ FITS THE CLIP CARD HOLDER AND THE FOLLOWING INSERTS: OIL/VINEGAR BOTTLES, SALT/PEPPER SHAKERS, TOOTHPICK HOLDERS, MILLS. ■ THE RIGHT-ANGLED GENERIC SHAPE ALSO ENABLES COMBINATION WITH ORIGINAL OIL BOTTLES (UP TO A FORMAT OF 52X52 MM)

### STAND FUNCTION CONCRETE

57.0196.9990  
185x102x32 mm



M3

High-quality concrete look, integrated logo  
Not dishwasher or food safe

### STAND FUNCTION MELAMINE

57.0196.9991  
185x102x32 mm

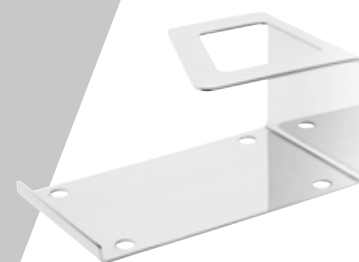


M4

Melamine with canvas look in chocolate brown (pantone 7518)  
Dishwasher safe, not food safe

## CLIPS

■ EXTENDS THE AVAILABLE SURFACE AREA OF THE STANDS TO FURTHER LEVELS  
■ 4 RECESSES ON THE BOTTOM FOR THE STAND FEET, TO ENSURE A GOOD, NON-SLIP STAND IN THE CLIPS. ■ SUITABLE FOR THE STAND SEQUENCE. ■ RECESS IN SEQUENCE SHAPE ENABLES USE OF THE FOLLOWING INSERTS: PORCELAIN DISHES XXS, GLASS BOWLS.



### CLIP STAND

57.0197.6040  
Stainless steel 18/10  
190x102x84 mm

C1



### DOUBLE-CLIP STAND

57.0198.6040  
Stainless steel 18/10  
190x102x150 mm

C2



### CLIP CARD HOLDER

57.0199.6040  
Stainless steel 18/10  
202x102x102 mm

C3

Side panels hold Sequence shapes.  
Suitable for all 4 stands.  
Slot on the side to put menus etc.  
Optional: Engraving on the side panel,  
e.g. table number.

## ACCESSORIES

### PORCELAIN DISH XXS

57.0201.9800  
Porcelain  
83x74x31 mm



1

Base form in Sequence shape. Fits  
Sequence recesses of the stands, clips or  
in the frame XXS. Can be supplemented  
by lid and serving spoons.  
Potential uses: spices, sugar, sauces.



### LID FOR PORCELAIN DISH XXS

57.0203.6040  
Stainless steel 18/10  
89x77x18 mm

2

Suitable for porcelain dish XXS. The  
distinct outer edge enables a good fit  
with the porcelain dish, without being  
secured to this. The raised corner  
enables simultaneous use of lids and  
serving spoons and make it easier to  
take the lid off.



### SERVING SPOON FOR PORCELAIN DISH XXS

57.0204.6040  
Stainless steel 18/10  
107x21x6 mm

3

Optimal fit in the porcelain dish, also in  
combination with its lid.

# HEPP ELEMENTS



## ACCESSORIES

### GLASS BOWL

57.0216.9990  
Glass  
80x71x63 mm



4

Base form in Sequence shape. Fits sequence recesses of the stands or clips and the frame XXS.

Potential uses: as a lantern, snack bowl or small flower container. Hand-blown glass - each piece a unique item.



### SALT SHAKER

57.0206.6040  
29x24x75 mm

### PEPPER SHAKER

57.0207.6040  
29x24x75 mm

### TOOTHPICK STAND

57.0208.6040  
29x24x55 mm  
Stainless steel 18/10 / silicone

7

8

9

Fits the small indent in the Function stand. Base form in Sequence shape. Can be combined with other shakers or the toothpick stand.

### FRAME XXS

57.0202.6040  
Stainless steel 18/10  
78x69x30 mm



5

Base form in Sequence shape. Suitable frame for porcelain dish XXS or glass bowl.



### VINEGAR/OIL BOTTLE

57.0205.6040  
Stainless steel 18/10 / glass / silicone  
52x52x135 mm

10

Fits the large indent in the Function stand. Unusual square base form. Potential individual combinations with original oil bottles or mill. Silicone spout for optimal cleaning. Hand-blown glass - each piece a unique item.

### TRAY

57.0200.6040  
Stainless steel 18/10  
166x166x16 mm



6

Suitable for individual combination of 4 items: porcelain dish XXS (with/without lid), sauce jug, milk jug. Further uses: base tray for oil/vinegar sets or towel holder for Asian market.



### SALT/PEPPER MILL

57.0209.6040  
Stainless steel 18/10 / acrylic glass / synthetic  
51x51x195 mm

11

Fits the large indent in the Function stand. Square base form. Suitable for salt/pepper. Potential individual combinations with oil/vinegar bottle or original oil bottle.

# HEPP ELEMENTS

## ACCESSORIES

### SAUCE JUG

Capacity: 300 ml  
57.0212.6040  
Stainless steel 18/10  
93x85x150 mm



12

Also suitable for tray or in Sequence stand, can be easily combined with small porcelain dishes. Use as sauce or soup jug.



### BOTTLE COOLER

57.0213.6040  
Stainless steel 18/10  
151x130x180 mm

15

Double-walled bottle cooler for 1 bottle. Base form in Sequence shape.

### MILK JUG

Capacity: 150 ml  
57.0211.6040  
Stainless steel 18/10  
90x82x95 mm



13

Suitable for tray, in combination with porcelain dishes. Use as small milk/cream jug or small sauce jug.



### LARGE VASE

57.0215.6040  
65x57x143 mm

### SMALL VASE

57.0215.6140  
65x57x95 mm

### ADAPTER CANDLE NOZZLE

57.0220.6040  
38x35x24 mm  
Stainless steel 18/10

16

17

18

Using the candle nozzle adapter, the (large or small) vase becomes a candle-stick. Feet in Sequence shape, fits Sequence stand or can be used as a standalone item.

### PASTRY STAND

57.0210.6040  
Stainless steel 18/10  
155x131x111 mm



14

Feet in Sequence shape, fits Sequence stand or can be used as a standalone article. Dish revives the Sequence shape.



### NAPKIN HOLDER

57.0217.6040  
Stainless steel 18/10  
90x36x120 mm

19

Elegant, simple design in Sequence shape. Can be used lying down or standing up.



### NAPKIN RING

57.0219.6040  
Stainless steel 18/10  
55x51x10 mm

20

Base form in Sequence shape. High material thickness for high-quality look. Napkin ring for 1 table napkin.

# CLIP STAND



**CLIP STAND SET CONCRETE**  
57.0237.6040

Set consisting of:  
**CLIP STAND** 57.0197.6040  
**STAND SEQUENCE CONCRETE** 57.0195.9990  
**2X PORCELAIN DISH XXS** 57.0201.9800

S5

# DOUBLE-CLIP STAND



**DOUBLE-CLIP STAND SET CONCRETE**  
57.0239.6040

Set consisting of:  
**DOUBLE-CLIP STAND** 57.0198.6040  
**STAND SEQUENCE CONCRETE** 57.0195.9990  
**3X PORCELAIN DISH XXS** 57.0201.9800

S7



**CLIP STAND SET MELAMINE**  
57.0238.6040

Set consisting of:  
**CLIP STAND** 57.0197.6040  
**STAND SEQUENCE MELAMINE** 57.0195.9991  
**2X PORCELAIN DISH XXS** 57.0201.9800

S6



**DOUBLE-CLIP STAND SET MELAMINE**  
57.0240.6040

Set consisting of:  
**DOUBLE-CLIP STAND** 57.0198.6040  
**STAND SEQUENCE MELAMINE** 57.0195.9991  
**3X PORCELAIN DISH XXS** 57.0201.9800

S8

# HEPP ELEMENTS SETS

## VINEGAR/OIL



**VINEGAR AND OIL SET CONCRETE**  
57.0233.6040

Set consisting of:  
**STAND FUNCTION CONCRETE** 57.0196.9990  
**SALT SHAKER** 57.0206.6040  
**PEPPER SHAKER** 57.0207.6040  
**2X VINEGAR/OIL BOTTLE** 57.0205.6040

S1



**VINEGAR AND OIL SET MELAMINE**  
57.0234.6040

Set consisting of:  
**STAND FUNCTION MELAMINE** 57.0196.9991  
**SALT SHAKER** 57.0206.6040  
**PEPPER SHAKER** 57.0207.6040  
**2X VINEGAR/OIL BOTTLE** 57.0205.6040

S2

## STAND WITH MILL



**STAND SET WITH MILL CONCRETE**  
57.0235.6040

Set consisting of:  
**STAND FUNCTION CONCRETE** 57.0196.9990  
**SALT/PEPPER MILL** 57.0209.6040  
**VINEGAR/OIL BOTTLE** 57.0205.6040  
**SALT SHAKER** 57.0206.6040  
**TOOTHPICK STAND** 57.0208.6040

S3



**STAND SET WITH MILL MELAMINE**  
57.0236.6040

Set consisting of:  
**STAND FUNCTION MELAMINE** 57.0196.9991  
**SALT/PEPPER MILL** 57.0209.6040  
**VINEGAR/OIL BOTTLE** 57.0205.6040  
**SALT SHAKER** 57.0206.6040  
**TOOTHPICK STAND** 57.0208.6040

S4





## SOUP



**SOUP SET CONCRETE**  
57.0242.6040

Set consisting of:  
**STAND SEQUENCE CONCRETE** 57.0195.9990  
**CLIP STAND** 57.0197.6040  
**PORCELAIN DISH XXS** 57.0201.9800  
**SERVING SPOON FOR PORCELAIN DISH XXS** 57.0204.6040  
**SAUCE JUG** 57.0212.6040

S9



**SOUP SET MELAMINE**  
57.0243.6040

Set consisting of:  
**STAND SEQUENCE MELAMINE** 57.0195.9991  
**CLIP STAND** 57.0197.6040  
**PORCELAIN DISH XXS** 57.0201.9800  
**SERVING SPOON FOR PORCELAIN DISH XXS** 57.0204.6040  
**SAUCE JUG** 57.0212.6040

S10

## MILK AND SUGAR



**MILK AND SUGAR SET**  
57.0241.6040

Set consisting of:  
**TRAY** 57.0200.6040  
**3X PORCELAIN DISH XXS** 57.0201.9800  
**2X LID FOR PORCELAIN DISH XXS** 57.0203.6040  
**2X SERVING SPOON FOR PORCELAIN DISH XXS** 57.0204.6040  
**MILK JUG** 57.0211.6040

S11

HEPP ELEMENTS SETS

THE ART  
OF  
SERVICE

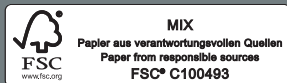


**proHeq GmbH  
HEPP**

Carl-Benz-Straße 10  
75217 Birkenfeld  
Germany  
Phone: +49 7231 4885 100  
Fax: +49 7231 4885 190  
[www.hepp.de](http://www.hepp.de) · [info@hepp.de](mailto:info@hepp.de)



**bvdm.**



**MIX**  
Papier aus verantwortungsvollen Quellen  
Paper from responsible sources  
**FSC® C100493**

Art.-Nr. 79.0001.0745/printed 03.2019  
All details are not binding. Typographical mistakes, changes and errors reserved for the entire contents.

