

Mobile Bars & Back Bars

FRONT BAR & BACK BAR COMBINATION SETS | LUXE LED BARS
FRONT BARS | THE MYSTIQUE BAR | BACK BARS | ETAGERES | COMPANION CARTS



MOBILE BARS - STANDARD FEATURES

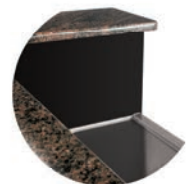
Forbes' Mobile Bars are available in solid wood, wood veneer or HPL finishes. Most are certified by ETL to meet NSF Standard 2 and include a stainless steel work counter, an insulated sink with drain, speed rails and sections for glass racks and storage. These bars are built to be durable and functional, yet attractive with many available accessories.



Most Forbes mobile bars are certified by ETL to meet NSF Standard 2

Standard sizes on most bars are 5' and 6'.
4' and 8' sizes are available on some models.
Please call for more details.

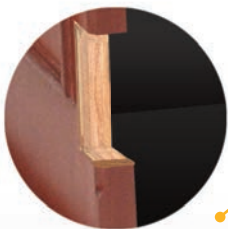
Cabinets are glued, pneumatically pinned, stapled and secured with screws and/or mod-ex fasteners.



22 gauge brushed stainless steel backsplash and working surface with spill lip.



12" x 14" x 9.75" insulated stainless steel ice bin with drain.



3/4" plywood construction using furniture-grade, 5-ply with no voids.
No MDF or particle board!

16 gauge stainless steel glass rack slides.

Two removable 18" long, 22 gauge stainless steel speed rails.

Casters are mounted to an 11 gauge steel reinforcement plate that spans the width of the base. Plates are drilled and tapped for easy caster replacement.

DELUXE BARS 7-STEP FINISHING PROCESS

- 1) Exterior is covered in 20 mil wood veneer
- 2) Interior is finished in High Pressure Laminate
- 3) Wood veneer and solid wood molding are sanded
- 4) Water-based, low-VOC stain is applied
- 5) Solvent-based sealant is applied
- 6) Final sanding
- 7) Varnish is applied

MOBILE BARS

MOBILE BARS & BACK BARS

COMBINATION SETS



**SUITABLE FOR
OUTDOOR USE**



Model 4885 (Back Bar)

Avonite countertop (shown with upgraded Recycled Glass)



Weather-resistant Tropical Hardwood exterior

Stainless steel ice pan

Two glass shelves

Enclosed brushed stainless steel bottom storage area

Concealed casters for mobility

	Length	Width	Height
in:	62	27.5	78
cm:	158	70	199



Model 4869-6 (Front Bar)

Avonite countertop (shown with upgraded Trend stone)



Weather-resistant Tropical Hardwood exterior

Stainless steel sink with drain

Stainless steel internal body

Two 18" stainless steel speed rails

Concealed casters for mobility

	Length	Width	Height
in:	72.75	27	48
cm:	185	69	122

*Model 4869-5 - 5' version

See the Tropical Hardwood family of products at:
www.forbesindustries.com/tropicalhardwood



Model 5771-6 (Front Bar)

Avonite countertop (shown with upgraded Trend glass)

Wood veneer finish

Stainless steel sink with drain

Two 18" stainless steel speed rails

Brushed stainless steel accents

Concealed casters for mobility

	Length	Width	Height
in:	72	30	47
cm:	183	77	120

*Model 5771-5 - 5' version



Model 5881 (Back Bar)

Avonite countertop (shown with upgraded recycled glass)

Wood veneer finish

One glass shelf in a wood frame

Four LED down lights in top hutch

Enclosed storage area

Concealed casters for mobility

	Length	Width	Height
in:	72	27	78
cm:	183	69	199

MOBILE BARS

MOBILE BARS & BACK BARS

The SlimFold

- Sets up in seconds
- Folds for compact storage
- Removable ice bin and speed rails
- Durable lightweight aluminum frame
- Wheels provide easy maneuverability
- Store 2 bars in the space of 1 conventional bar
- Beautiful wood veneer body with optional Recycled top
- Only 18" wide and folds down to less than 14" wide!

Find out more at: www.forbesindustries.com/slimfold



Model 5808 (Back Bar)

Avonite countertop (shown with upgraded Trend stone)

Wood veneer finish

18" Width for compact storage

LED down lights

Stainless steel ice pan

Two glass shelves with open back

Enclosed storage area

Concealed casters for mobility

	Length	Width	Height
in:	60	18	78
cm:	153	46	199



Model 5806-6 (Front Bar)

Avonite countertop (shown with upgraded Trend stone)

Wood veneer finish

Removable plastic ice bin

Two 18" stainless steel speed rails

Folding top, base and sides for compact storage

Casters for mobility

	Length	Width	Height
in:	72	31	46.5
cm:	183	79	119

Find out more at:

www.forbesindustries.com/slimfold



Model 4879-6 (Front Bar)

Avonite serving countertop



Stainless steel sink with drain

Two 18" stainless steel speed rails

Framed in solid wood

Inset HPL panels

Concealed casters for mobility

	Length	Width	Height
in:	74.5	28.5	48
cm:	190	73	122

*Model 4879-5 - 5' version



Model 4883 (Back Bar)

Stainless steel countertop and doors



HPL finish

LED down lights

Two glass shelves

Stainless steel ice pan with drain

Enclosed storage area

Concealed casters for mobility

	Length	Width	Height
in:	62	23.5	78
cm:	158	60	199

MOBILE BARS

MOBILE BARS & BACK BARS



Model 5887 (Back Bar)

Avonite countertop

Two-tone wood veneer/HPL finish

Tempered glass shelves

Enclosed storage area

Concealed casters for mobility

	Length	Width	Height
in:	76	25	78
cm:	193	64	199



Model 5777-6 (Front Bar)

Avonite countertop

Two-tone wood veneer/HPL finish

Stainless steel sink with drain

Two 18" stainless steel speed rails

Concealed casters for mobility

	Length	Width	Height
in:	76	26	48
cm:	193	66	122

Find out more at:

www.forbesindustries.com/zenbar



Model 5868

Avonite countertop

Wood veneer finish

Solid wood molding

Four glass shelves

Stainless steel ice pan with drain

Concealed casters for mobility

	Length	Width	Height
in:	48	24	72
cm:	122	61	183



Model 5779-5 (Front Bar)

Avonite countertop

Wood veneer finish

Stainless steel sink with drain

Two 18" stainless steel speed rails

Solid wood molding

Solid brass foot rail

Concealed casters for mobility

	Length	Width	Height
in:	66	30	46
cm:	168	77	117

*Model 5779-6 - 6' version

ALCHEMY BAR



Model 5874 (Back Bar)

Avonite countertop (shown with upgraded recycled glass)
 Wood veneer/perforated brushed stainless steel finish
 RGB LED back light system in top hutch
 Six glass shelves
 Bottom storage cabinet
 Concealed casters for mobility

	Length	Width	Height
in:	70	27	77.5
cm:	178	69	197



Model 5783 (Front Bar)

Avonite countertop (shown with upgraded recycled glass)
 Shown with optional LED inlay
 Wood veneer/perforated brushed stainless steel finish
 Tapered body design
 Stainless steel sink with drain
 Two 18" stainless steel speed rails
 Concealed casters for mobility

	Length	Width	Height
in:	80.25	33	47.5
cm:	204	84	121



Model 5860 (Back Bar)

Avonite countertop
 Wood veneer finish
 LED down lights
 Acrylic mirror back
 Three glass shelves
 Solid wood molding
 Concealed casters for mobility

	Length	Width	Height
in:	72	26	76
cm:	183	67	194



Model 5769-6 (Front Bar)

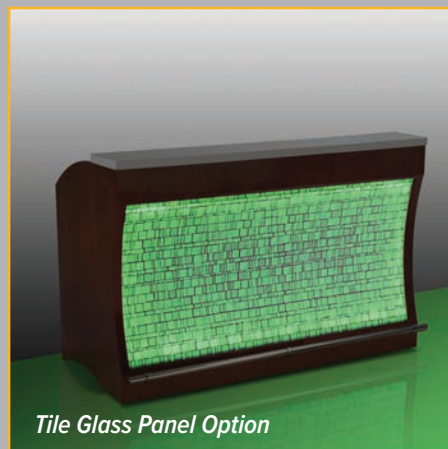
Avonite countertop
 Wood veneer finish
 Stainless steel sink with drain
 Two 18" stainless steel speed rails
 Solid wood molding
 Concealed casters for mobility

	Length	Width	Height
in:	72	27	47
cm:	183	69	120

*Model 5769-5 - 5' version



REMOTE-CONTROLLED LED LIGHTING GIVES YOU VARIABLE COLOR CONTROL AND EFFECTS AT YOUR FINGERTIPS.



Tile Glass Panel Option



White Acrylic Panel Option

WAVE BAR



Model 5873 (Back Bar)

*Recycled stone/glass countertop
Wood veneer finish
LED down lights
RGB LED back light system in top hutch
Option of acrylic or tiled top hutch
Six glass shelves
Concealed casters for mobility*

	Length	Width	Height
in:	70	27.5	78
cm:	178	70	199



Model 5773-6 (Front Bar)

*Recycled stone/glass countertop
Wood veneer finish
Option of acrylic or tiled front panel
RGB LED back light front panel
Stainless steel working counter
Single sink with drain
Two 18" stainless steel speed rails
Two open cabinets with glass rack slides
Concealed casters for mobility*

	Length	Width	Height
in:	70	33.5	47
cm:	178	86	120



Back View

LED

ENHANCED TECHNOLOGY



Etched Mirror Acrylic Panel Option



SPECTRUM BAR



Model 4863-5-W (Front Bar)

RGB LED light system

Option of white acrylic or etched mirror panels

Powder coated steel frame

Heavy duty plastic working counter

Two removable speed rails

Two plastic ice bins

Casters for mobility

	Length	Width	Height
in:	60	30	47
cm:	153	77	120



Model 4886-W (Back Bar)

RGB LED light system

Option of white acrylic or etched mirror panels

Powder coated steel frame

Heavy duty plastic working counter

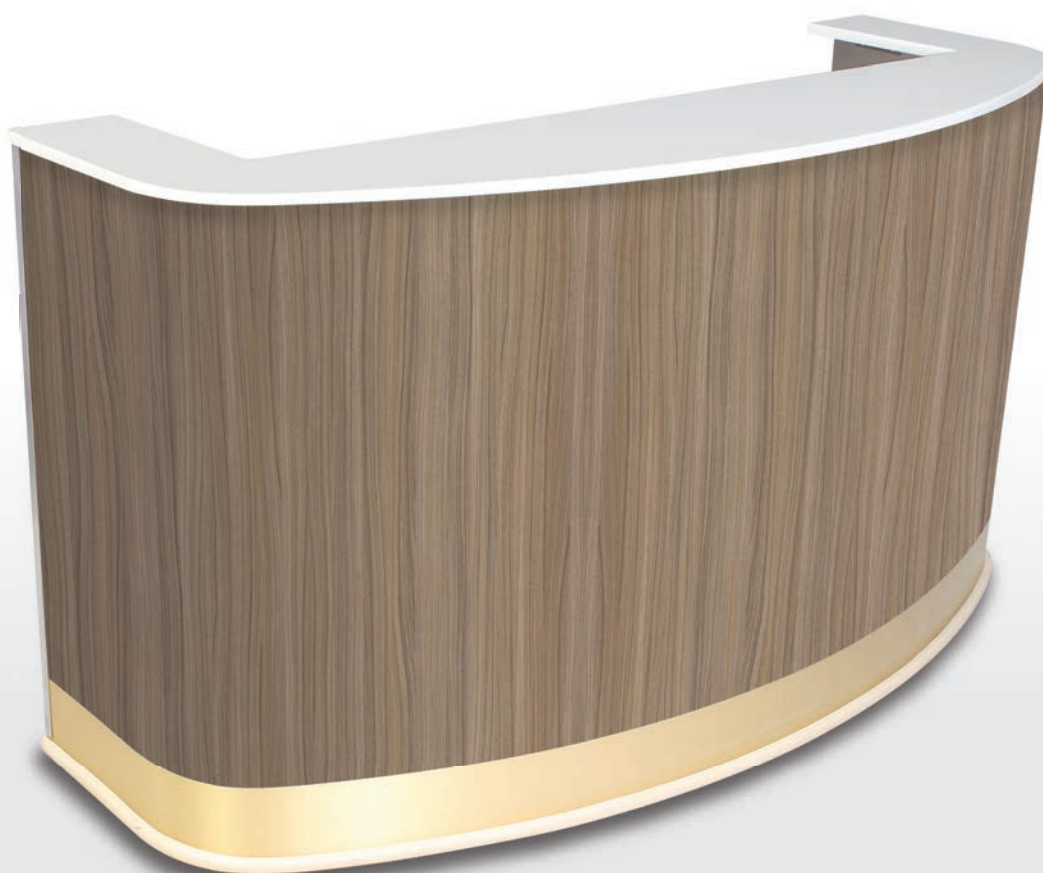
Casters for mobility

	Length	Width	Height
in:	60	29	77.25
cm:	153	74	197

MOBILE BARS

MOBILE FRONT BARS

CONTEMPORARY



THE MARTINI BAR



Model 4872

Avonite countertop

HPL finish

Stainless steel sink with drain

Two 18" stainless steel speed rails

Shown with brushed brass accent

Full wrap around bumper

Concealed casters for mobility

	Length	Width	Height
in:	83	30	48
cm:	211	77	122



THE HANGOVER BAR



Model 4864 (Front Bar)

Avonite serving countertop with waterfall edge

HPL finish

Stainless steel sink with drain

Two 18" stainless steel speed rails

Brushed stainless steel accents

Full wrap around bumper

Concealed casters for mobility

	Length	Width	Height
in:	75	30	48
cm:	191	77	122

MOBILE BARS

MOBILE FRONT BARS

CONTEMPORARY



Model 4859-6

Avonite countertop



Stainless steel sink with drain

Full length built-in stainless steel speed rail

HPL finish with stainless steel colored laminate front panel

Concealed casters for mobility

	Length	Width	Height
in:	73	31	49.5
cm:	186	79	126

*Model 4859-5 - 5' version



Model 5771-6

Avonite countertop (shown with upgraded Trend stone)

Wood veneer finish

Stainless steel sink with drain

Two 18" stainless steel speed rails

Brushed stainless steel accents

Concealed casters for mobility

	Length	Width	Height
in:	72	30	47
cm:	183	77	120

*Model 5771-5 - 5' version



Model 4847-5

HPL countertop

HPL finish

Stainless steel sink with drain

Two 18" stainless steel speed rails

PVC edge banding

Concealed casters for mobility

	Length	Width	Height
in:	62	26	48.5
cm:	158	67	124

*Model 4847-6 - 6' version



Model 4878-6

Avonite countertop

HPL finish

Stainless steel sink with drain

Two 18" stainless steel speed rails

Concealed casters for mobility

	Length	Width	Height
in:	72	28	46
cm:	183	72	117

*Model 4878-5 - 5' version

MOBILE BARS

MOBILE FRONT BARS

TRADITIONAL



Model 5779-6

Avonite countertop

Wood veneer finish

Stainless steel sink with drain

Two 18" stainless steel speed rails

Solid wood molding

Solid brass foot rail is standard (shown with polished stainless steel foot rail)

Concealed casters for mobility

	Length	Width	Height
in:	78	30	46
cm:	199	77	117

*Model 5779-5 - 5' version



Model 5769-6

Avonite countertop

Wood veneer finish

Stainless steel sink with drain

Two 18" stainless steel speed rails

Solid wood molding

Concealed casters for mobility

	Length	Width	Height
in:	72	27	47
cm:	183	69	120

*Model 5769-5 - 5' version



Model 5776-6

Avonite countertop (shown with upgraded Trend glass)

Wood veneer finish

Stainless steel sink with drain

Two 18" stainless steel speed rails

Solid wood molding

Solid brass foot rail

Concealed casters for mobility

	Length	Width	Height
in:	73	29	48
cm:	186	74	122

*Model 5776-5 - 5' version

Model 5781-6

Avonite countertop

Wood veneer finish

Stainless steel sink with drain

Two 18" stainless steel speed rails

Solid wood molding

Concealed casters for mobility

	Length	Width	Height
in:	73	25.5	48
cm:	143	65	122

*Model 5781-5 - 5' version

MOBILE BARS

MOBILE FRONT BARS

DESIGNER



RUSTICA BAR



Model 5785-6

Avonite countertop

Barn-door inspired hardwood exterior

Stainless steel sink with drain

Two 18" stainless steel speed rails

Rustic pipe foot rail

Concealed casters for mobility

	Length	Width	Height
in:	79	32	48
cm:	201	82	122

*Model 5785-5 - 5' version



ZEN BAR



Model 5777-6

Avonite countertop

Two-tone wood veneer/HPL finish

Stainless steel sink with drain

Two 18" stainless steel speed rails

Concealed casters for mobility

	Length	Width	Height
in:	76	26	48
cm:	193	66	122

Find out more at:

www.forbesindustries.com/zenbar



ALCHEMY BAR



Model 5783 (Front Bar)

Avonite countertop (shown with upgraded Trend glass)
Shown with optional LED inlay
Wood veneer/perforated brushed stainless steel finish
Tapered body design
Stainless steel sink with drain
Two 18" stainless steel speed rails
Concealed casters for mobility

	Length	Width	Height
in:	80.25	33	47.5
cm:	204	84	121



FIJI BAR



Model 4867-6

HPL countertop
HPL body with black powder coated decorative slat metal accents
Stainless steel sink with drain
Two 18" stainless steel speed rails
Concealed casters for mobility

	Length	Width	Height
in:	72	26	48
cm:	183	66	122

*Model 4867-5 - 5' version

MOBILE BARS

MOBILE FRONT BARS

MINIMALIST



Model 5789-6

Avonite countertop

Wood veneer finish (custom color shown)

Stainless steel sink with drain

Two 18" stainless steel speed rails

Solid wood molding

Concealed casters for mobility

	Length	Width	Height
in:	72	26	48
cm:	183	67	122

*Model 5789-5 - 5' version



Model 4879-6

Avonite serving countertop



Stainless steel sink with drain

Two 18" stainless steel speed rails

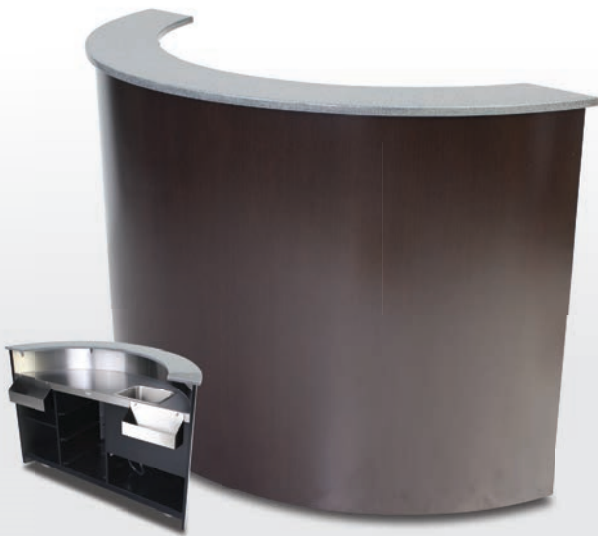
Framed in solid wood

Inset HPL panels

Concealed casters for mobility

	Length	Width	Height
in:	74.5	28.5	48
cm:	190	73	122

*Model 4879-5 - 5' version



Model 4880-6

Avonite countertop

HPL finish

Curved body design

Stainless steel sink with drain

Two 18" stainless steel speed rails

Concealed casters for mobility

	Length	Width	Height
in:	74.5	28.5	48
cm:	190	73	122

*Model 4880-5 - 5' version

*Model 5790-5 - 5' wood veneer version

*Model 5790-6 - 6' wood veneer version



Model 4861-6

HPL countertop

HPL finish

Shown with polished stainless steel looking accent strip

Stainless steel sink with drain

Two 18" stainless steel speed rails

Four corner bumpers

Concealed casters for mobility

	Length	Width	Height
in:	72.5	25	48.25
cm:	185	64	123

*Model 4861-5 - 5' version

SPECIALTY



LIGHTWEIGHT BAR



Model 4865-5

HPL countertop



Weather-resistant all stainless steel body

HPL accent panels

Stainless steel sink with drain

Two 18" stainless steel speed rails

Casters for mobility

	Length	Width	Height
in:	63.5	27	48
cm:	162	69	122

**Model 4865-6 - 6' version*

QUICK SHIP BAR



Model 4071-6-GD

Black countertop



Negotiating in Geneva HPL

Stainless steel sink with drain



Two 18" stainless steel speed rails

Corner bumpers

Concealed casters for mobility

	Length	Width	Height
in:	71.75	25.75	49.5
cm:	183	66	126

**Model 4071-6-TS - Thunderstorm HPL version*



OUTDOOR BAR



Model 4869-6

Avonite countertop (shown with upgraded Trend stone)



Weather-resistant Tropical Hardwood exterior

Stainless steel sink with drain

Stainless steel internal body

Two 18" stainless steel speed rails

Concealed casters for mobility

	Length	Width	Height
in:	72.75	27	48
cm:	185	69	122

*Model 4869-5 - 5' version

See the Tropical Hardwood family of products at:

www.forbesindustries.com/tropicalhardwood



The SlimFold

SPACE SAVING BAR



Model 5806-6 (Front Bar)

Avonite countertop (shown with upgraded Trend stone)

Wood veneer finish

Removable plastic ice bin

Two 18" stainless steel speed rails

Folding top, base and sides for compact storage

Casters for mobility

	Length	Width	Height
in:	72	31	46.5
cm:	183	79	119

Find out more at:

www.forbesindustries.com/slimfold



**ONE BAR. MULTIPLE LOOKS.
INTERCHANGEABLE PANEL SYSTEM.**

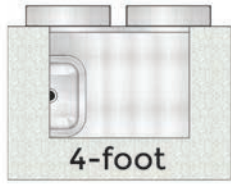




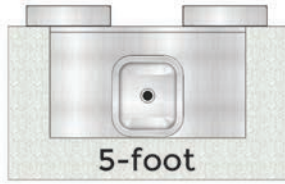
MYSTIQUEBAR

THREE LENGTHS TO CHOOSE FROM

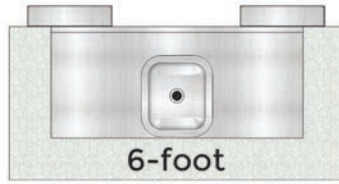
4, 5, and 6-foot bars are available



4-foot



5-foot



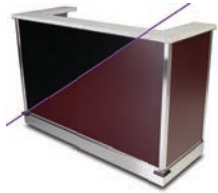
6-foot

TWO PANEL TYPES TO CHOOSE FROM

Store up to three sets in one bar!

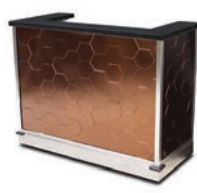
DOUBLE-SIDED REVERSIBLE HPL PANELS

Choose two colors per panel from our selection of over 30 HPL Options!



3D TEXTURED HIGH IMPACT THERMOPLASTIC PANELS

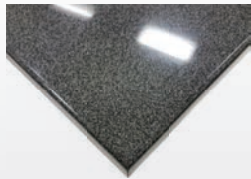
Choose from 10 super durable 3D textured plastic panel options!



TWO COUNTERTOP MATERIALS TO CHOOSE FROM

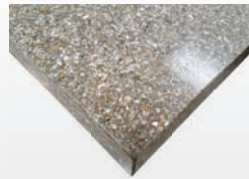
STANDARD AVONITE COUNTERTOPS

Choose from our selection of standard Avonite colors

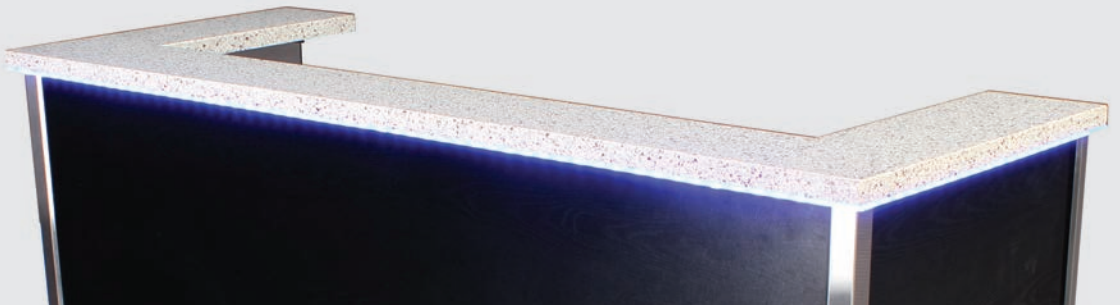


UPGRADED RECYCLED GLASS/STONE COUNTERTOPS

Or upgrade to our Eco-friendly Recycled material countertops that are available in several finishes



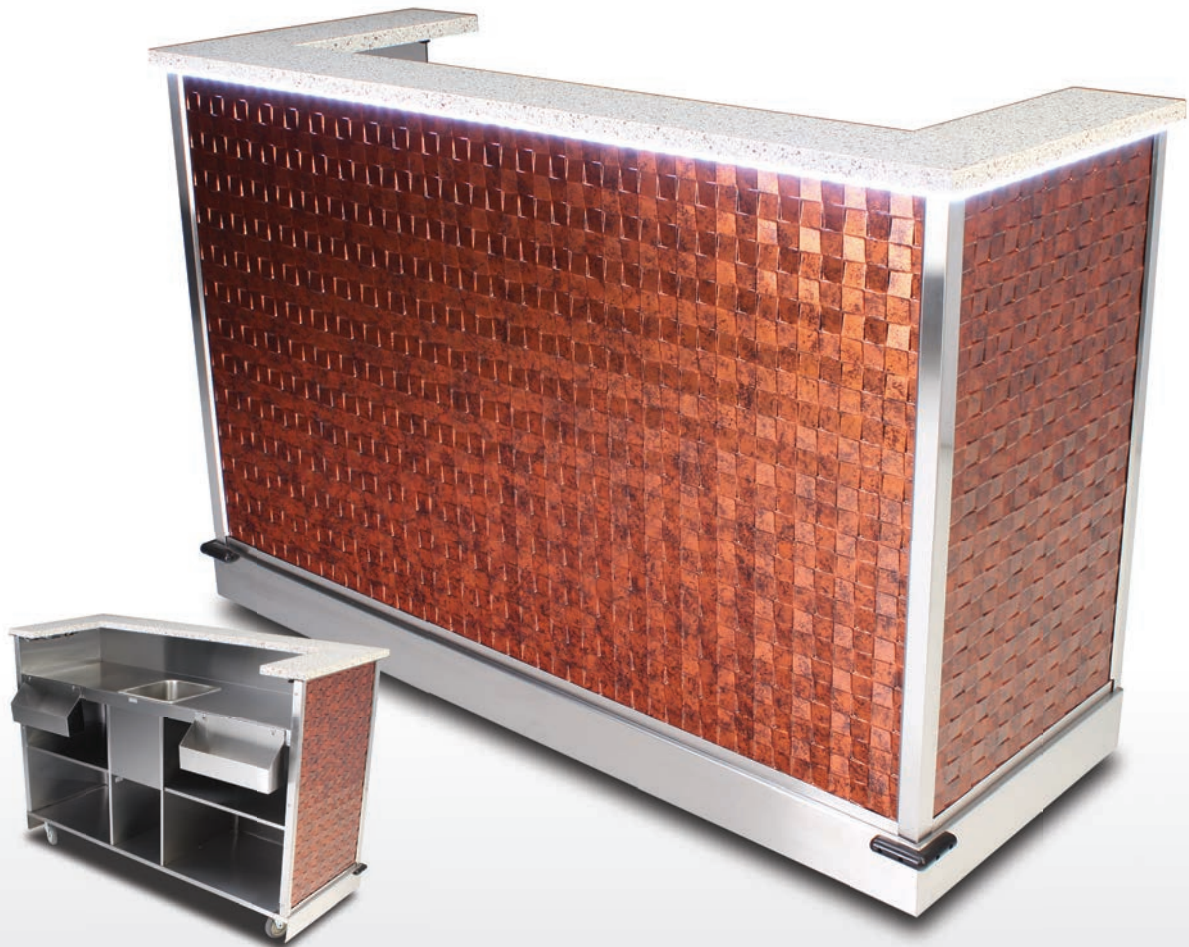
ADD REMOTE-CONTROLLED RGB LED LIGHTING



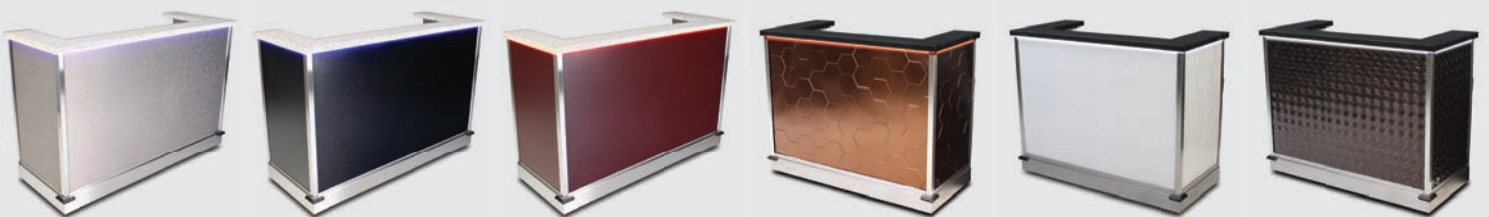
The Mystique Mobile Bar from Forbes Industries features removable, replaceable, and interchangeable front and side panels that allow you to completely customize the look to suit your specific needs! The innovative panel-swapping and storage system makes it easy to switch your bar's look and feel in mere minutes, eliminating the need for multiple bars. The Mystique Bar is the ultimate mobile bar. You'll never need to replace it!

**For more details and a complete list of finish options, please visit: www.forbesindustries.com/mystique-bar*

INTERCHANGEABLE PANELS ALLOW FOR ENDLESS POSSIBLE COMBINATIONS



NOW WITH QUICK-RELEASE INSERTS TO CHANGE THE LOOK IN MINUTES!



Model 4866-6

Avonite countertop (shown with upgraded Trend)

Available with under counter RGB LED lighting

Over 40 unique panel options (sold separately)

Built-in storage compartment - stores up to 3 complete panel sets

All stainless steel body

Two 18" stainless steel speed rails

Corner bumpers

Brushed stainless steel accents

Concealed casters for mobility

	Length	Width	Height
in:	73.5	28.25	48.75
cm:	187	72	124

**Model 4866-5 - 5' version*

**Model 4866-4 - 4' version*

**Panels sold separately. Call for details.*

MYSTIQUEBAR

MOBILE BARS

MOBILE BACK BARS

BACK BARS



Model 4883

Stainless steel countertop and doors



HPL finish

LED down lights

Two glass shelves

Stainless steel ice pan with drain

Enclosed storage area

Concealed casters for mobility

	Length	Width	Height
in:	62	23.5	78
cm:	158	60	199



Model 5873

Trend stone/glass countertop

Wood veneer finish

LED down lights

RGB LED back light system in top hutch

Option of acrylic or tiled top hutch

Six glass shelves

Concealed casters for mobility

	Length	Width	Height
in:	70	27.5	78
cm:	178	70	199



Model 5881

Avonite countertop (shown with upgraded recycled glass)

Wood veneer finish

One glass shelf in a wood frame

Four LED down lights in top hutch

Enclosed storage area

Concealed casters for mobility

	Length	Width	Height
in:	72	27	78
cm:	183	69	199

MOBILE BARS

MOBILE BACK BARS



Model 5860

Avonite countertop

Wood veneer finish

LED down lights

Acrylic mirror back

Three glass shelves

Solid wood molding

Concealed casters for mobility

	Length	Width	Height
in:	72	26	76
cm:	183	67	194



Model 5868

Avonite countertop

Wood veneer finish

Solid wood molding

Four glass shelves

Stainless steel ice pan with drain

Concealed casters for mobility

	Length	Width	Height
in:	48	24	72
cm:	122	61	183



Model 5870

Avonite countertop (custom color)

Wood veneer finish

LED down lights

Four wood shelves

Solid wood molding

Concealed casters for mobility

	Length	Width	Height
in:	72	27.5	78
cm:	183	70	199



Model 4887

Avonite countertop

HPL finish

Four shelves

Stainless steel ice pan with drain

Concealed casters for mobility

	Length	Width	Height
in:	74.5	32	80
cm:	190	82	204

MOBILE BARS

MOBILE BACK BARS



ZEN BACK BAR



Model 5887

Avonite countertop

Two-tone wood veneer/HPL finish

Tempered glass shelves

Enclosed storage area

Concealed casters for mobility

	Length	Width	Height
in:	76	25	78
cm:	193	64	199

Find out more at:

www.forbesindustries.com/zenbar



SPACE SAVING BACK BAR



Model 5808

Avonite countertop (shown with upgraded Trend stone)

Wood veneer finish

18" Width for compact storage

LED down lights

Stainless steel ice pan

Two glass shelves with open back

Enclosed storage area

Concealed casters for mobility

	Length	Width	Height
in:	60	18	78
cm:	153	46	199

Find out more at:

www.forbesindustries.com/slimfold



OUTDOOR BACK BAR



Model 4885

Avonite countertop (shown with upgraded Trend glass)



Weather-resistant Tropical Hardwood exterior

Stainless steel ice pan

Two glass shelves

Enclosed brushed stainless steel bottom cabinet

Concealed casters for mobility

	Length	Width	Height
in:	62	27.5	78
cm:	158	70	199

See the Tropical Hardwood family of products at:
www.forbesindustries.com/tropicalhardwood



ALCHEMY BACK BAR



Model 5874

Avonite countertop (shown with upgraded Trend)

Wood veneer/perforated brushed stainless steel finish

RGB LED back light system in top hutch

Six glass shelves

Bottom storage cabinet

Concealed casters for mobility

	Length	Width	Height
in:	70	27	77.5
cm:	178	69	197

MOBILE BARS

MOBILE BACK BARS

ETAGERES



Model 6570-EN

Black powder coated epoxy steel frame

Eight safety glass shelves

Adjustable shelving

Casters for mobility

	Length	Width	Height
in:	48	14	68.5
cm:	122	36	174



Model 6570-SS

Brushed stainless steel frame

Eight safety glass shelves

Adjustable shelving

Casters for mobility

	Length	Width	Height
in:	48	14	68.5
cm:	122	36	174



Model 6570-PS

Polished stainless steel frame

Eight safety glass shelves

Adjustable shelving

Casters for mobility

	Length	Width	Height
in:	48	14	68.5
cm:	122	36	174



Model 6570

Polished solid brass frame

Eight safety glass shelves

Adjustable shelving

Casters for mobility

	Length	Width	Height
in:	48	14	68.5
cm:	122	36	174

MOBILE BARS

MOBILE COMPANION CARTS

COMPANION CARTS



Model 4420

Ice restock cart



HPL finish

Insulated stainless steel interior and lid

	Length	Width	Height
in:	25.5	17.5	31.75
cm:	65	45	81



Model 4426

Ice restock cart

Weather resistant Tropical Hardwood exterior

Insulated stainless steel interior and lid

	Length	Width	Height
in:	26.5	18.25	32
cm:	68	47	82

See the Tropical Hardwood family of products at:

www.forbesindustries.com/tropicalhardwood



Model 5746-D

Mobile hand wash station

HPL finish (shown in mahogany)

Stainless steel countertop

Two locking swing doors

Single 10" deep sink

Liquid soap dispenser

ADA compliant long faucet handles

NSF51 Certified

Available in maple, cherry, white, or black HPL

	Length	Width	Height
in:	25	25	43
cm:	64	64	110

*Model 5746 - Single 6" deep sink

*Model 5746-2 - Double sink

*Model 5746-3 - Triple sink

ACCESSORIES



Model 6117
Beer dispensing system



Model 6116
In-counter hand wash system



Model 6116-UC
Under-counter hand wash system



Model 6118/ 6119
Premix system/Post-mix (bag-in-box) system



Model 6131
Jumbo 2.5 sq. ft. capacity insulated stainless steel sink with drain



Model 6055
Fixed corner bumpers



Model 6054
Full wrap-around bumper



Model 6150
Stainless steel lined interior base



Padded Nylon Mobile Bar Covers
Model 6285 - 5' padded nylon cover
Model 6286 - 6' padded nylon cover

Padded Nylon Back Bar Covers
Model 6295 - 5' padded nylon cover
Model 6296 - 6' padded nylon cover



Model 6000
Custom logos



In-counter RGB LED lighting
**Not available on all models. Call for pricing and availability.*



Under counter RGB LED lighting
**Not available on all models. Call for pricing and availability.*

**Not all accessories are available on all models. Call for more information.*

**For a complete list of finish options, please visit: www.forbesindustries.com/finish-options*